



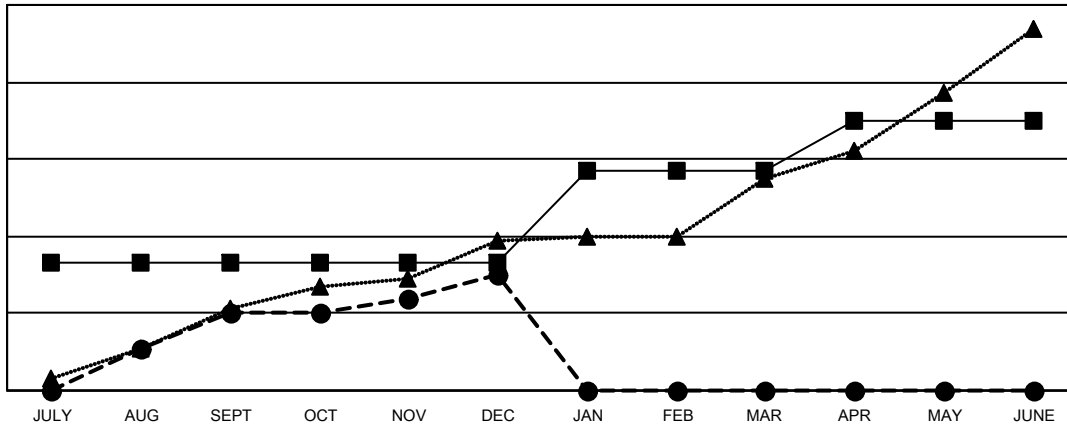
GMT: OPEN

GMT CA 6 - S

Clubs			
RESULTS FOR 2023-2024			
QUARTER	NEW CLUB GOAL	NEW CLUBS	DROPPED CLUBS
JULY/AUG/SEPT	33	20	2
OCT/NOV/DEC	0	10	27
JAN/FEB/MAR	24	0	0
APR/MAY/JUNE	13	0	0

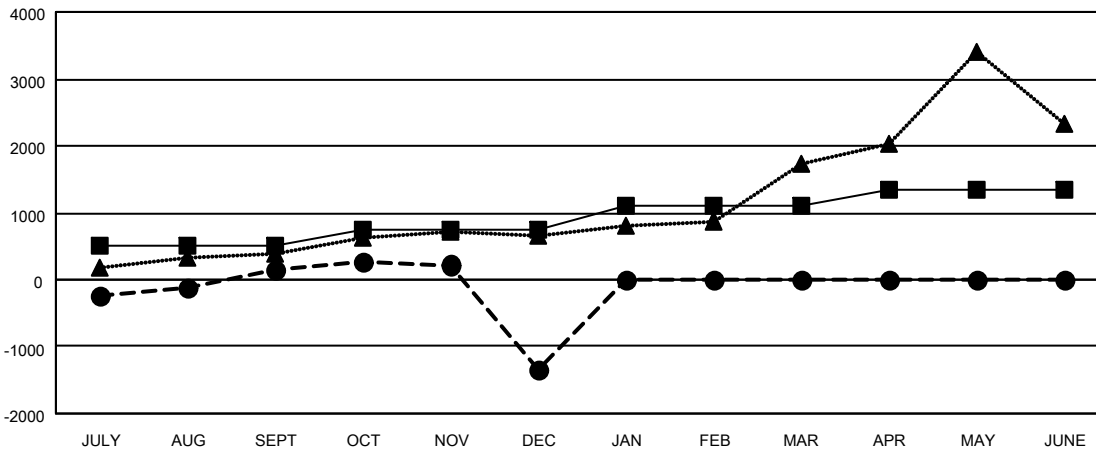
Members			
RESULTS FOR 2023-2024			
QUARTER	MEMBER GROWTH NET GOAL	MEMBER GROWTH ACTUAL	DROPPED MEMBERS ACTUAL (including transfers)
JULY/AUG/SEPT	514	1,119	744
OCT/NOV/DEC	245	1,060	2,248
JAN/FEB/MAR	348	0	0
APR/MAY/JUNE	243	0	0

GOALS AND ACTUAL NEW CLUBS CUMULATIVE



- - CURRENT YEAR GOALS FOR NEW CLUBS
- - CURRENT YEAR ACTUAL NEW CLUBS
- ▲ - LAST YEAR ACTUAL NEW CLUBS

GOALS AND ACTUAL MEMBERS CUMULATIVE



- - MEMBER GROWTH NET GOAL
- - MEMBER GROWTH ACTUAL
- ▲ - LAST YEAR MEMBERSHIP ACTUAL

DROPPED CLUBS: 29	237 CLUBS OF 812 ADDED 1 OR MORE NEW MEMBERS	GENDER DISTRIBUTION MALE 16,619 (77.48%) FEMALE 4,831 (22.52%)
DROPPED MEMBERS DECEASED 9 CLUB CANCELLED 843 OTHER 2,141 TOTAL 2,993	CLICK HERE FOR CUMULATIVE MEMBERSHIP DATA	TOTAL FAMILY UNIT MEMBERS 6,219 FAMILY MEMBERS PAYING HALF DUES 4,365